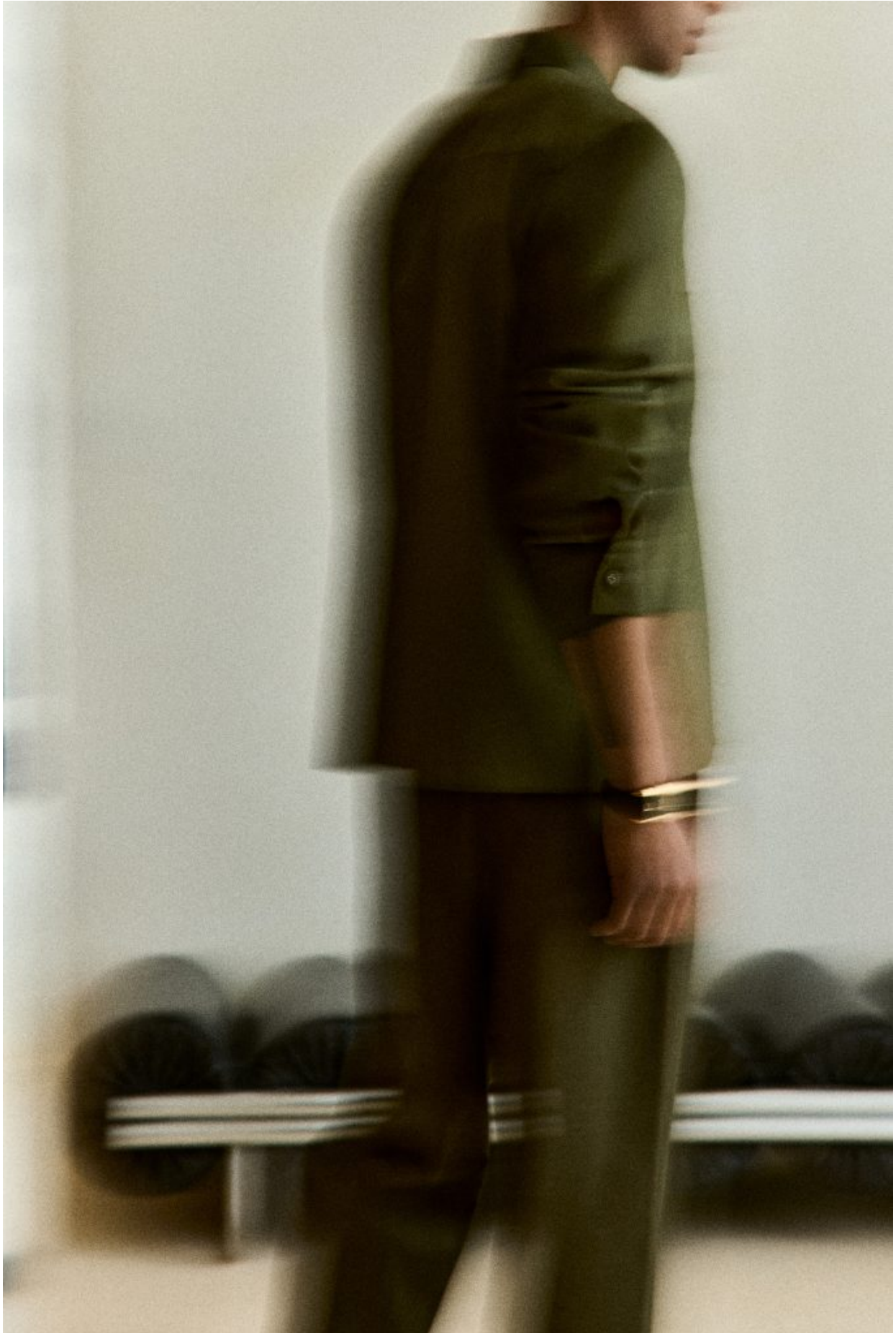


Annabelle Tiaffay

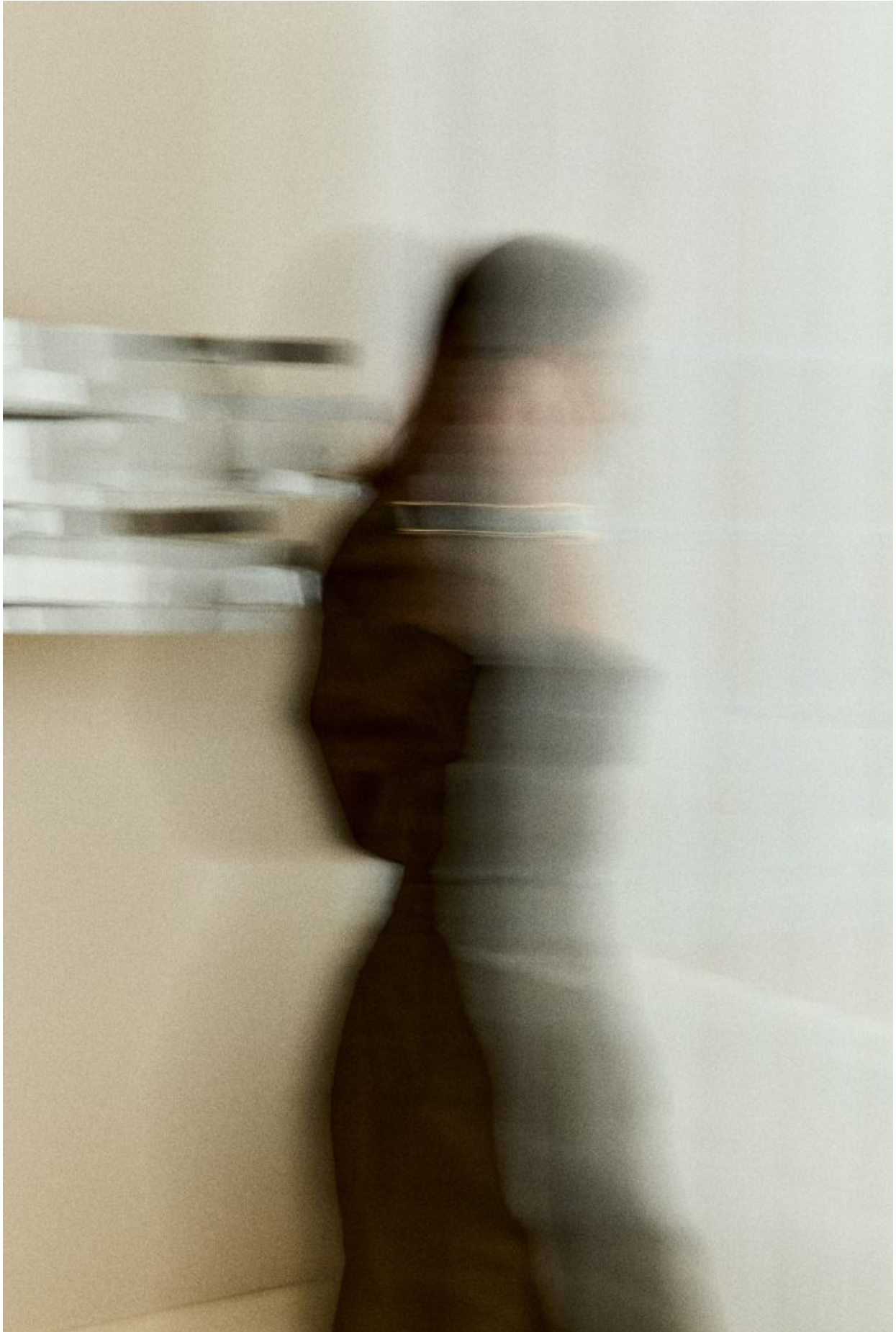
Audemars Piguet – Neo Frame

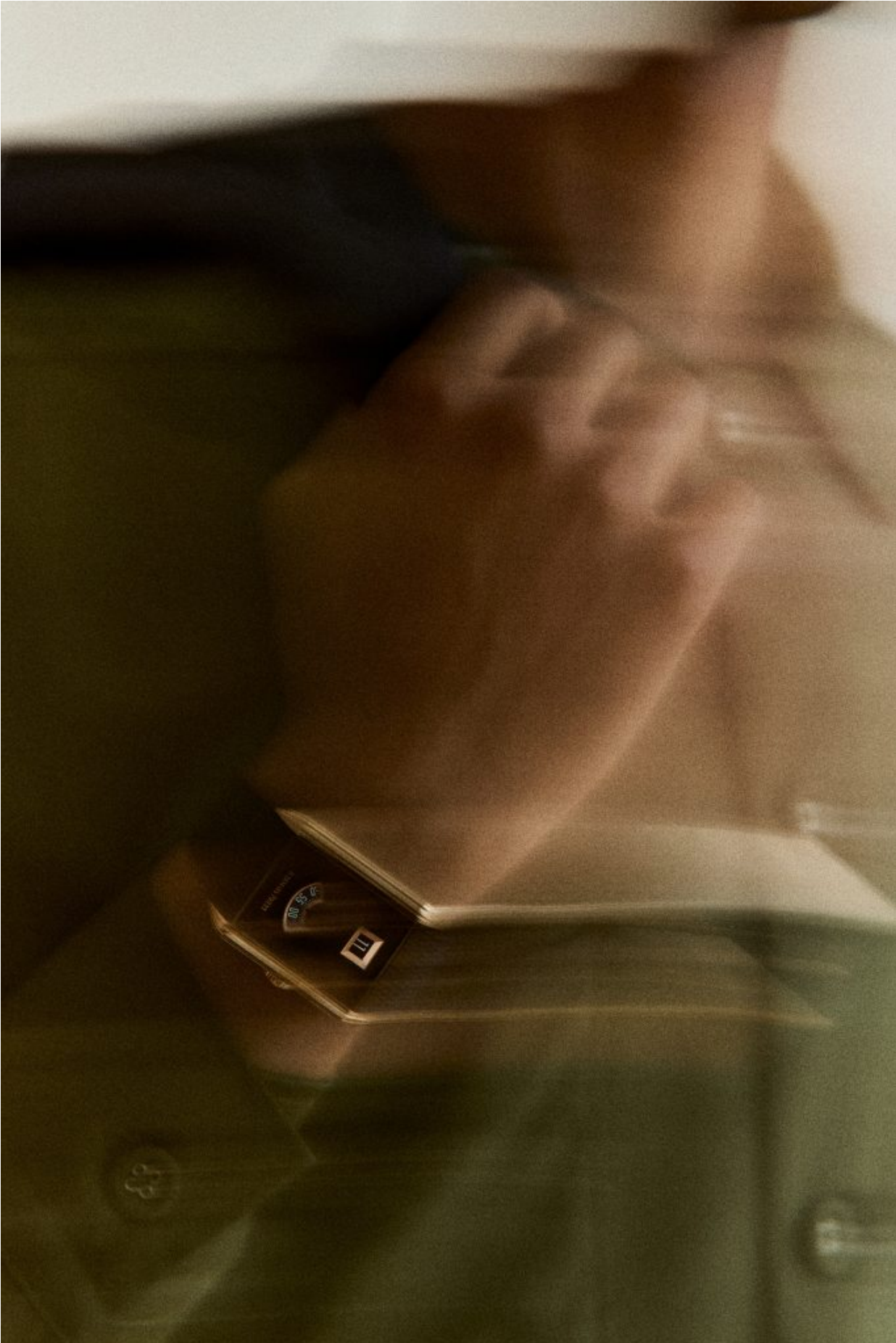
Annabelle (Paris) has a singular gift for uniting artistry, abstraction, beauty, and luxury within a single image, while preserving the object's perfect legibility and, in doing so, making it truly desirable.

Her conceptual creations unfold as genuine visual narratives. Influenced by modern art movements, her work explores the vibration of color and the tension of contrast through minimal, modern compositions.



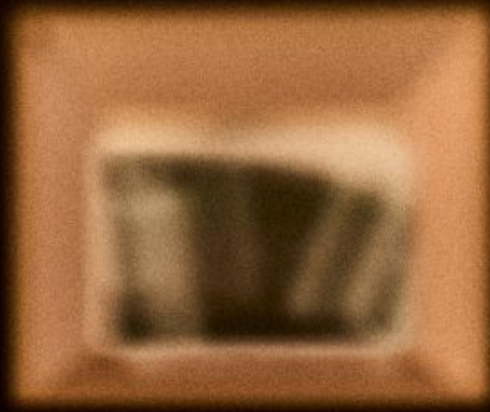












AUDEMARS PIGUET



